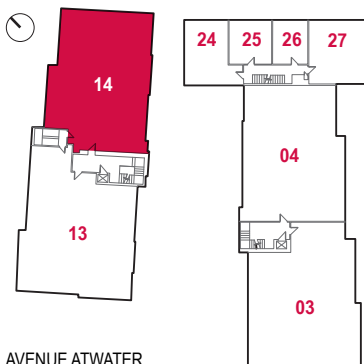


Les appartements Atwater



AVENUE ATWATER

14

7 1/2

CHAMBRES À COUCHER / BEDROOMS
3

SUPERFICIE / AREA
1618 pi.ca.

CUISINE / KITCHEN
14'-00" x 8'-2"

SALLE À MANGER / DINING ROOM
14'-0" x 14'-7"

SALON / LIVING ROOM
13'-11" x 19'-7"

SALLE DE BAIN 1 / POWDER ROOM 1
8'-5" x 4'-10"

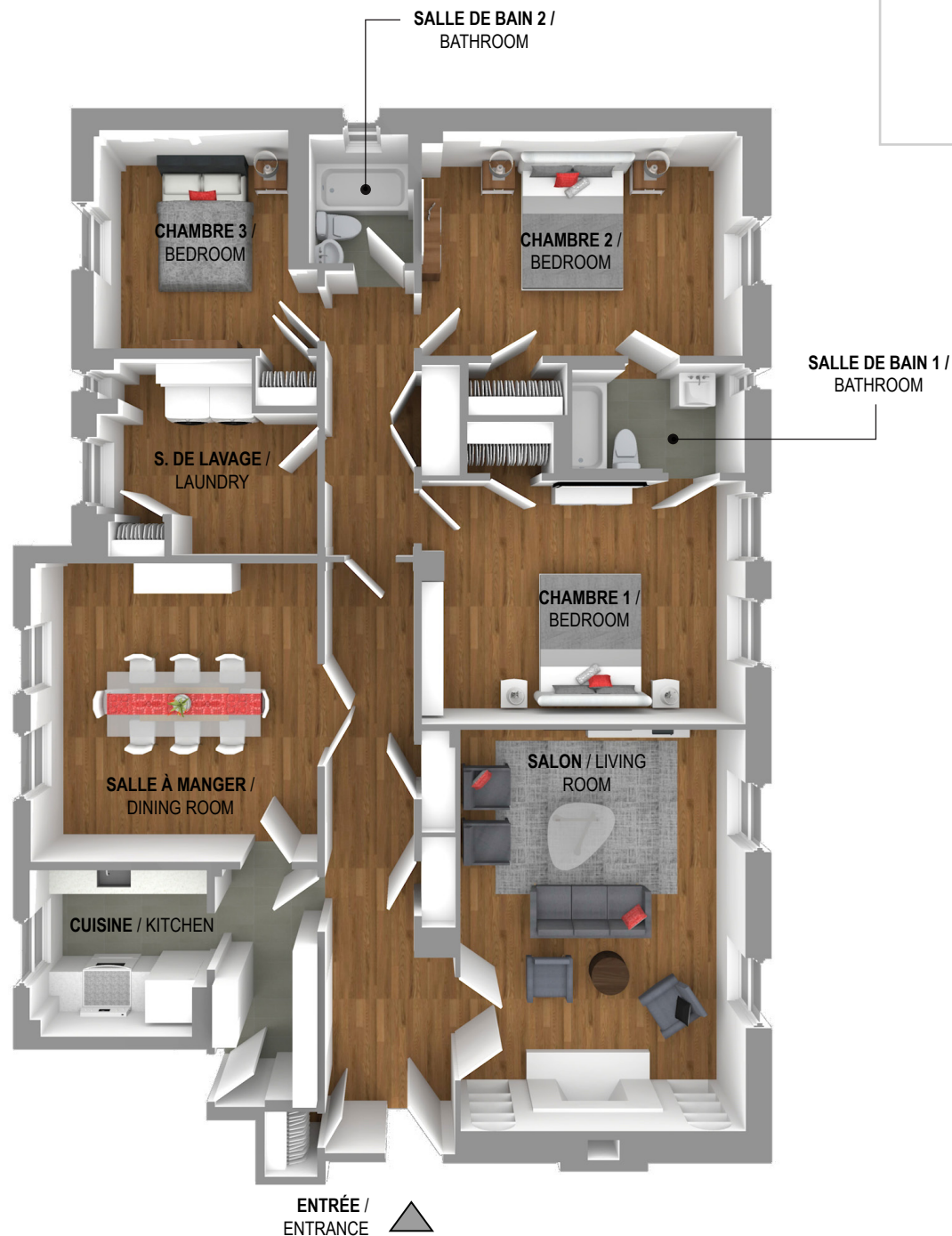
SALLE DE BAIN 2 / BATHROOM 2
4'-10" x 6'-4"

CHAMBRE 1 / BEDROOM 1
15'-10" x 11'-10"

CHAMBRE 2 / BEDROOM 2
15'-8" x 10'-11"

CHAMBRE 3 / BEDROOM 3
9'-6" x 10'-8"

SALLE DE LAVAGE / LAUNDRY ROOM
10'-9" x 9'-7"

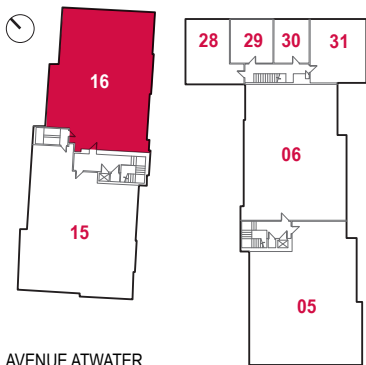


LES SUPERFICIES ET DIMENSIONS SONT APPROXIMATIVES. LES FINIS INTÉRIEURES PEUVENT VARIER. /
THE AREAS AND DIMENSIONS ARE APPROXIMATE. INTERIOR FINISHES MAY VARY.

 CROMWELL

T: 514.867.5999
www.cromwellmgt.ca

Les appartements Atwater



16

7 1/2

CHAMBRES À COUCHER / BEDROOMS
4

SUPERFICIE / AREA
1618 pi.ca.

CUISINE / KITCHEN
13'-11" x 8'-2"

SALLE À MANGER / DINING ROOM
13'-11" x 14'-5"

SALON / LIVING ROOM
13'-10" x 19'-6"

SALLE DE BAIN 1 / POWDER ROOM 1
8'-5" x 5'-4"

SALLE DE BAIN 2 / BATHROOM 2
4'-11" x 6'-4"

CHAMBRE 1/ BEDROOM 1
15'-10" x 11'-10"

CHAMBRE 2 / BEDROOM 2
15'-10" x 11'-0" x

CHAMBRE 3 / BEDROOM 3
9'-6" x 10'-8"

CHAMBRE 4 / BEDROOM 4
10'-10" x 9'-11"



LES SUPERFICIES ET DIMENSIONS SONT APPROXIMATIVES. LES FINIS INTÉRIEURES PEUVENT VARIER. /
THE AREAS AND DIMENSIONS ARE APPROXIMATE. INTERIOR FINISHES MAY VARY.

 CROMWELL

T: 514.867.5999
www.cromwellmgt.ca